

Brief Introduction of

Shanghai Motor Vehicle Inspection Center

上海机动车检测中心

3rd Asia Automobile Institute Summit, Bangkok, 03rd Dec. 2014

*National Center of Supervision and Inspection on
Motor Vehicle Products Quality (Shanghai)*

*National Center of Supervision and Inspection on
New Energy Motor Vehicle Products Quality*

*National Motor Vehicle Special Equipment Metering
Station*

国家机动车产品质检中心（上海） 国家新能源机动车产品质检中心 国家机动车专用检测设备计量站



Shanghai Motor Vehicle Inspection Center (SMVIC) is a third party testing and technology research institute, which is invested by Shanghai government.

- *Has more than 40 years history as a professional motor vehicle test and inspection technical center.*
- *Established an world class technical test center in Anting Automobile City as newborn name Shanghai Motor Vehicle Inspection Center in 28th, Sep. 2003.*
- *As a national level motor vehicle test and technical center, was granted with all kind of test and inspect authorization by different official certification authorities.*





As a test and calibration lab certificated by CNAS according to ISO/IEC 17025



Being the national institute officially authorized by AQSIQ and CNCA

■ *National Center of Supervision and Inspection on Motor Vehicle Products Quality (Shanghai)*

■ *National Center of Supervision and Inspection on New Energy Motor Vehicle Products Quality (the only)*

■ *National Motor Vehicle Special Equipment Metering Station (the only)*



Tips:

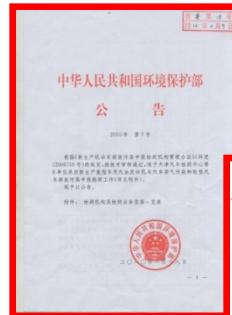
CNAS (China National Accreditation Service for Conformity Assessment)

AQSIQ (General Administration of Quality Supervision, Inspection and Quarantine of the P.R.C)

CNCA (Certification and Accreditation Administration of the P.R.C)

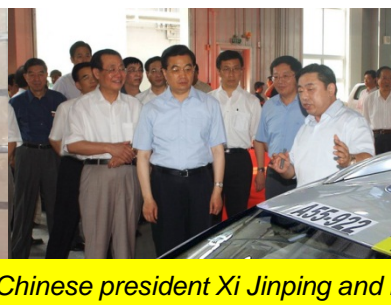


SMVIC is authorized by all government and industry department related to motor vehicle management in China, e.g. MIIT, MEP, MOC, CNCA, AQSIQ (DPAC AQSIQ), etc.



Tips: MIIT (Ministry of Industry and Information Technology of the P.R.C), MEP (Ministry of Environmental Protection of the P.R.C), MOT (Ministry of Transport of the P.R.C), DPAC AQSIQ (Defective Products Administration Center, AQSIQ)

In the process of development, SMVIC has got the concern and support from all levels of leader and government department



Chinese president Xi Jinping and Hu Jintao (former) visited SMVIC



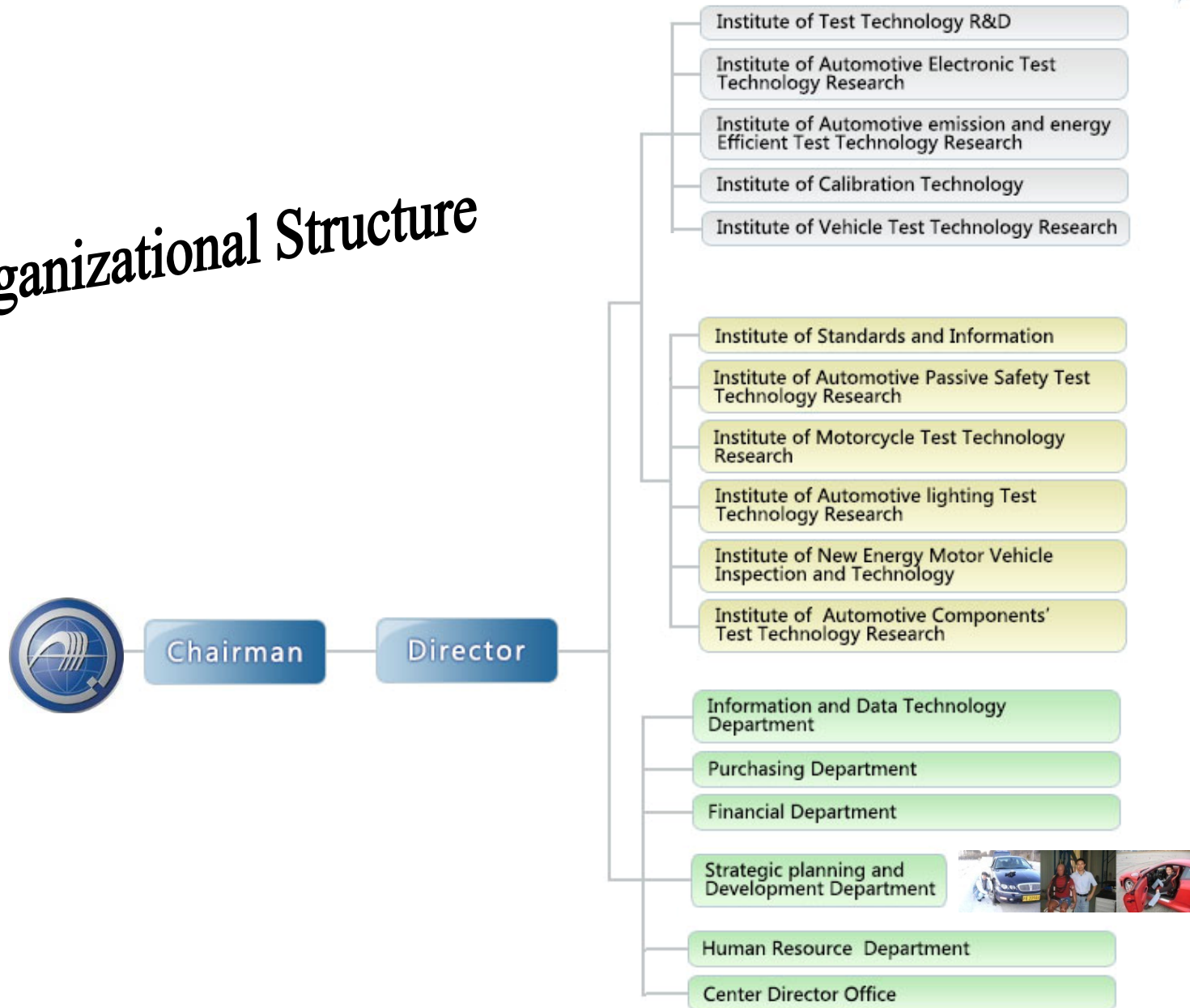
Our Scale

- ❑ on the west edge of Shanghai, China
- ❑ in the beautiful Anting · Shanghai International Automobile City
- ❑ area covers around 180,000 square meters
- ❑ more than 1,200 major test equipment
- ❑ around 350 employees, incl. engineers and technicians
- ❑ investment more than 1.2 billion RMB (around 200 million \$)





Organizational Structure





Capability of SMVIC

- ❑ *99 category of automotive products, above 400 items/parameters of test & calibration, thousands of related standard, protocol, procedure and specification listed in certification paper.*
- ❑ *Test products covers vehicle, motorcycle, ATV (Four-wheel All Terrain Vehicle), New Energy vehicle and related parts & components.*
- ❑ *Test fields covers safety, environment protection, energy efficiency, new energy, etc.*
- ❑ *Related to R&D testing, test technology research, standardization research, product quality inspection and QS control monitoring.*
- ❑ *Not only the Chinese GB standard, but also ECE/EC, FMVSS/EPA, ADR, GS/GSO/SASO, NCAP protocols, etc.*

(more details as following pages)





Motor Vehicle Performance Testing
& Technical Research

Motor Vehicle Components Testing
& Technical Research



The motor vehicle fundamental characteristic and durability, general safety, active safety (e.g. braking, ABS, ESP/ESC, etc.), NVH, VOC, etc.

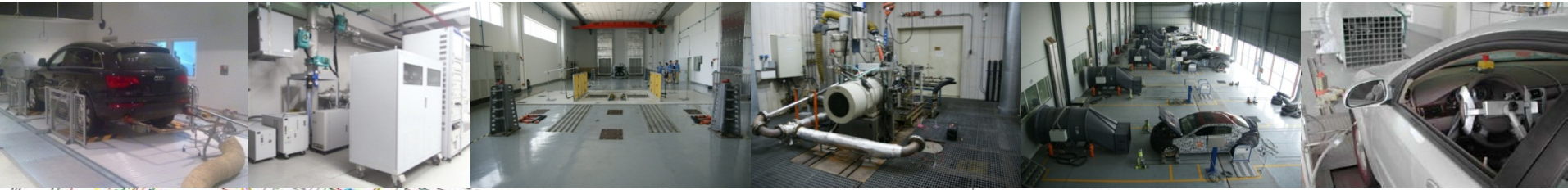
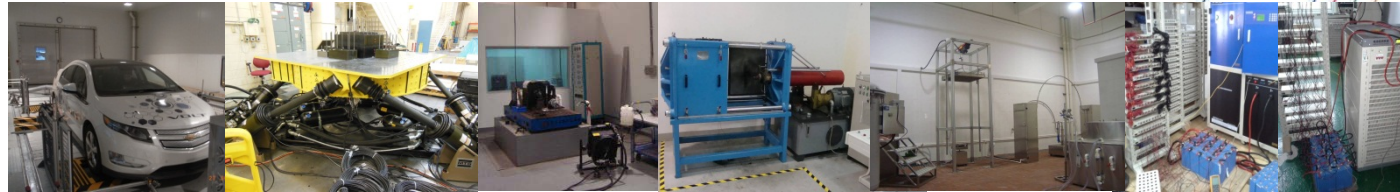
The motor vehicle parts safety feature (seat & CRS, safety belt, mirror, horn, door lock and door retention components, brake hose, interior trimming material, fuel tank, etc.), BIW structural strength (roof, side door, safety belt anchorage), chassis system durability, mechanical performance, chemical analysis, environmental simulation, etc.





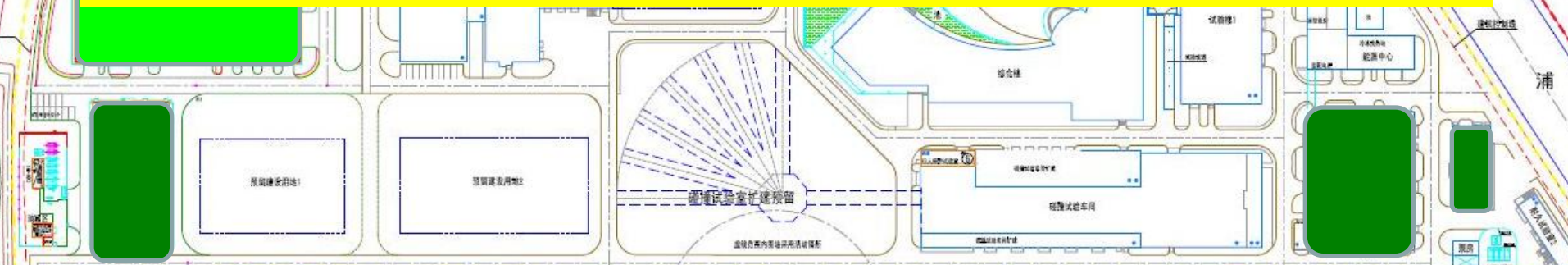
New Energy Vehicle Testing & Technical Research

Emission & Fuel Consumption Testing & Technical Research



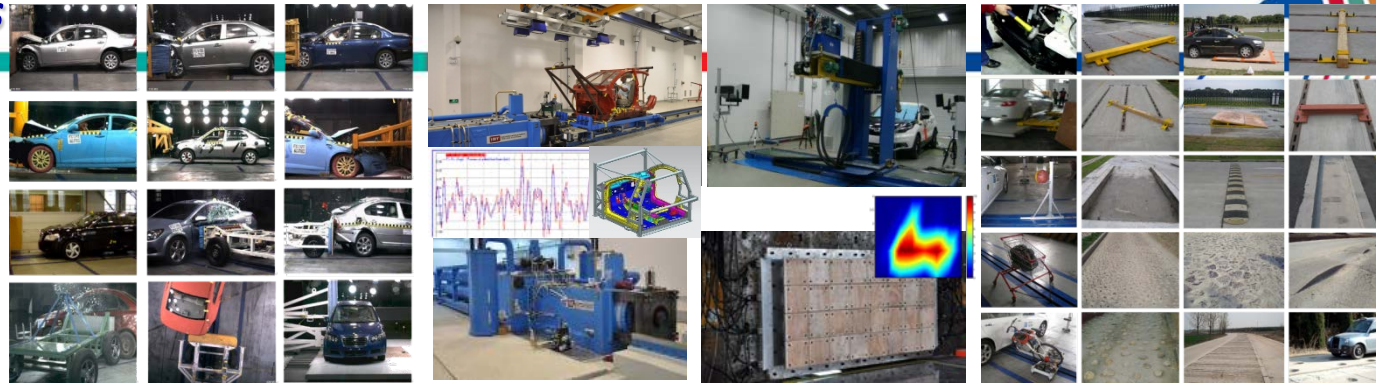
The new energy vehicle (EV, HEV, Fuel Cell) fundamental characteristic and durability, energy consumption, electrical safety, IP, battery, electric motor, BMS

Vehicle emission (chassis Dynos for light-duty and heavy duty vehicle), engine performance and emission (engine Dynos for vehicle, off-road, small gasoline engine), VT-shed for evaporate emission endurance

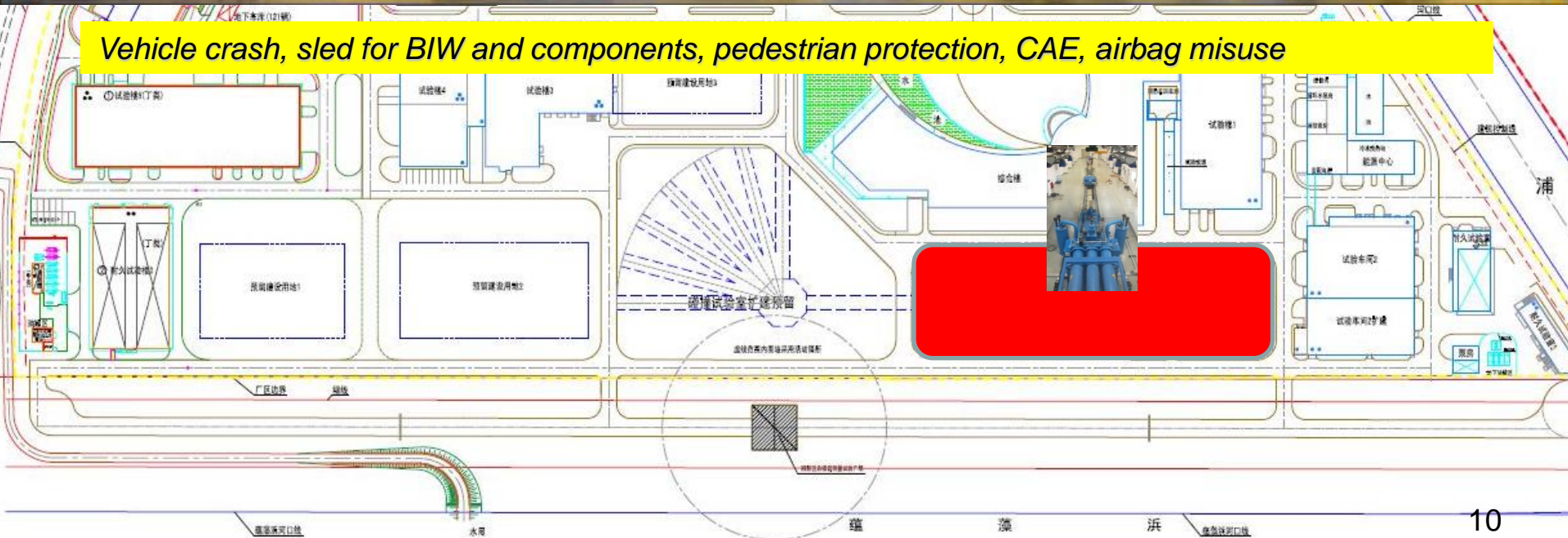


Know more about us

Passive Safety (Crash) Testing & Technical Research

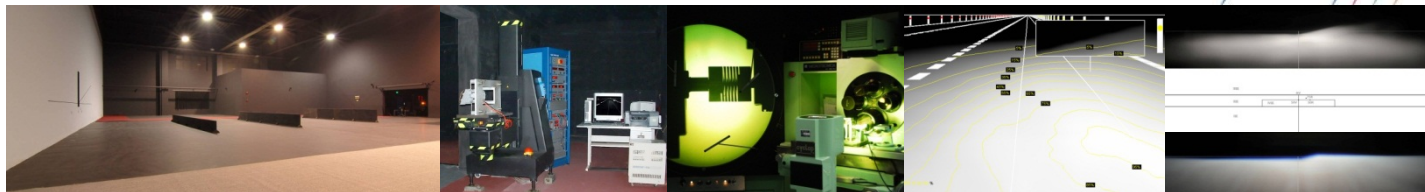


Vehicle crash, sled for BIW and components, pedestrian protection, CAE, airbag misuse





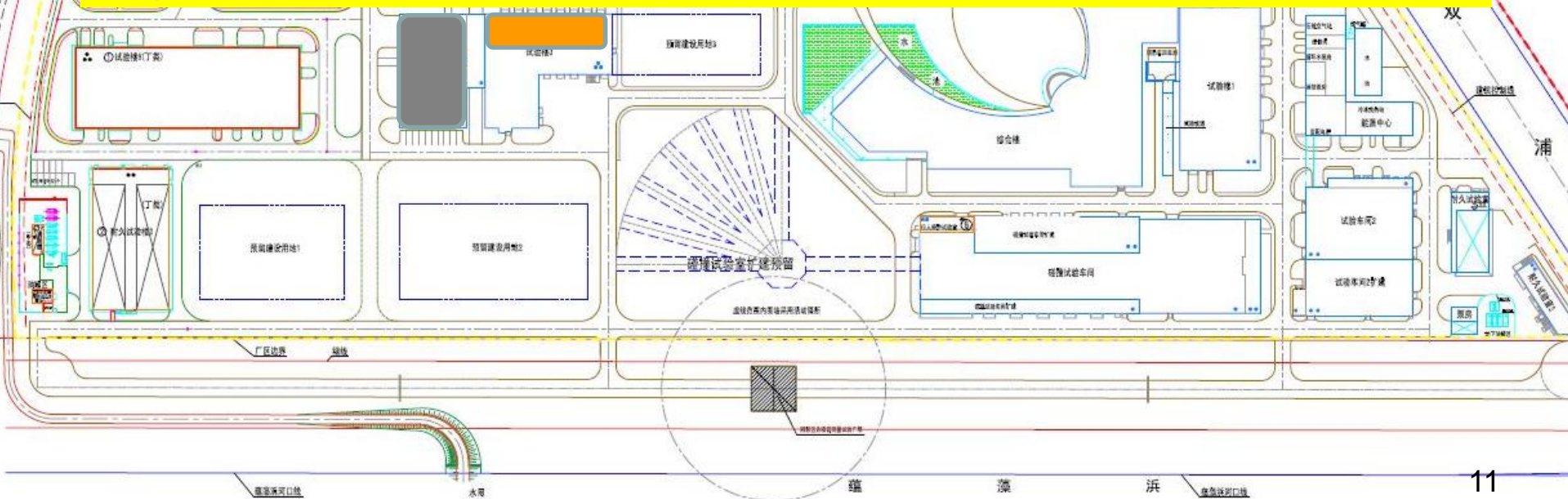
Auto Lamps and Lighting
Testing & Technical Research



Automotive Electronics & EMC
Testing & Technical Research



External lighting and signal devices photometric characteristics, lighting simulation & assessment, filament measurement, EMC (EMI & EMS) for motor vehicle, new energy vehicle and electronic components



SMVIC is the chairman and secretariat of SAC/TC114/SC1 Sub-committee 1 on Motorcycle of National Technical Committee 114 on Automobile of Standardization Administration of China.

SMVIC is the chairman and secretariat of SAC/TC114/SC21 Sub-committee 21 on Auto Lamps and Lighting of National Technical Committee 114 on Automobile of Standardization Administration of China.

SMVIC is the chairman and secretariat of SAC/TC344 National Technical Committee 344 on ATV of Standardization Administration of China.

SMVIC is the executive chairman and secretariat of Technical Committee on New Energy Automobile and Application of Standardization Administration of Shanghai.

SMVIC is also the member of all other SC or WG of SAC/TC114.

Based on it, SMVIC is responsible for or participate in national and local standardization work on Motor Vehicle and New Energy Vehicle.



SMVIC is also take active part in international standardization organization

□ ISO/TC

ISO/TC22/SC22 on road vehicle/Motorcycle

ISO/TC22/SC23 on road Vehicle/Moped

ISO/TC22/SC8 on road vehicle/Light and signal

the WG and Joint WG of SC as above

□ Participate UN ECE/WP29 meeting for twice a year

UN ECE/WP29/GRSG, General Safety WG

UN ECE/WP29/GRE, Lighting and Signal WG



Linkage of Global Trend and Market **International Cooperation**

More than 30 MOU and more than 60 cooperating organizations
SAE, JARI, TÜV NORD, DEKRA, ADAC, VSCC&ARTC, etc.

Testing Cooperation

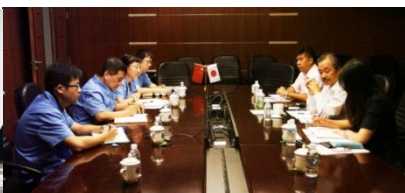
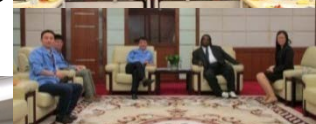
US EPA (ATV, Small Engine emission), DEKRA (CRS), JARI (Passive safety), ADAC (Euro NCAP), Volkswagen (Vehicle related test), Intertek (EMC & Electronic)

Workshop and Forum

Host or participate international technical workshop or forum, e.g. Improve Child Safety Awareness & Law Enforcement Conference 2014 (As holder), cooperate with Children's Hospital of Philadelphia, Munich University, Volvo, Britax, PSA, etc.), International Forum on Automotive Lighting (IFAL) (As co-holder by Fudan University, GTB, Karlsruhe Institute für Technologie)

International Event

China International Industry Fair 2014 (Participate), Bibendum Challenge & 2007 (as referee unit), Formula SAE China (as referee unit)



Global Laboratory Accreditation or Official test result recognition, e.g. ADR, GSO, VSCC, ECE (through different certification service body), ADAC (R&D pre-test), SGS&BV, US consumer protection, etc.

自動車実用突試検査施設の技術協力

上海機動車検測中心 献

財団法人日本自動車研究所は二〇二二年三月から二〇三三年九月にかけて車衝突試験施設の設計、建設および人員訓練等の業務に突試検査技術について全面にわたって技術協力を是目的に行つた。

当試験室の技術能力は自動車実用突試検査要求を満足している。

二〇三三年九月一日付

財団法人 日本自動車研究所
研究部長 工學博士 小松 誠

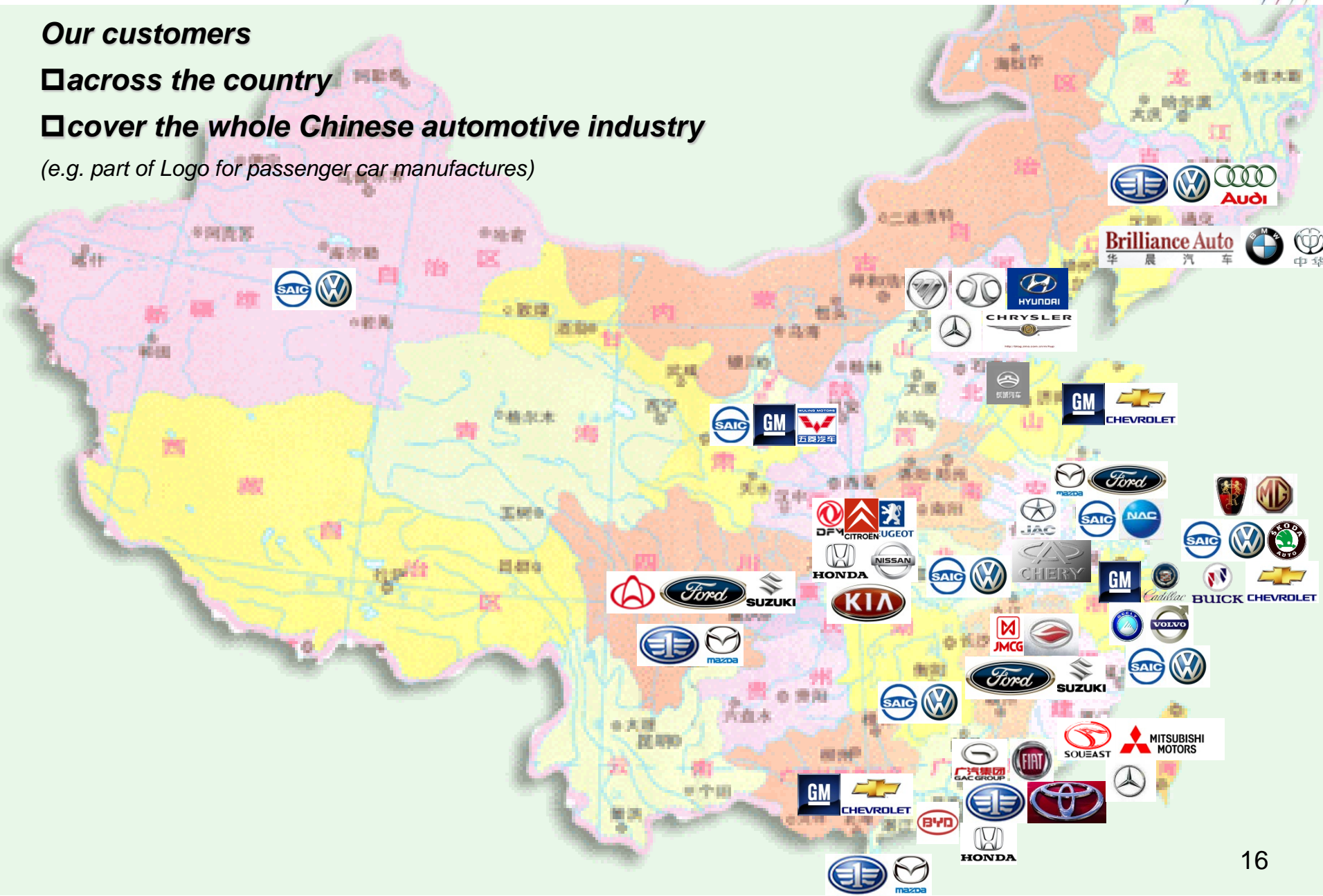


Our customers

□ across the country

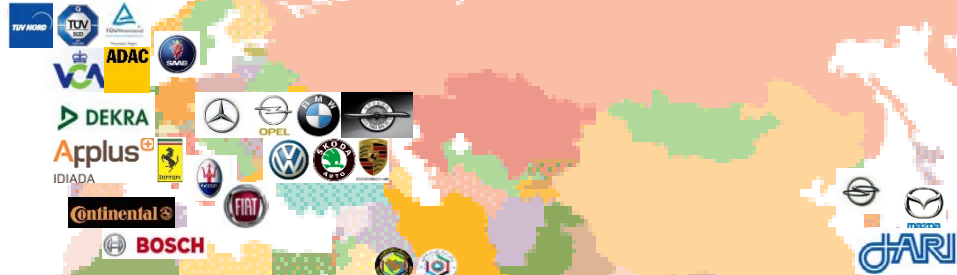
□ cover the whole Chinese automotive industry

(e.g. part of Logo for passenger car manufactures)





LINCOLN
Ford
DELPHI
GM
Cadillac
BUICK
CHEVROLET

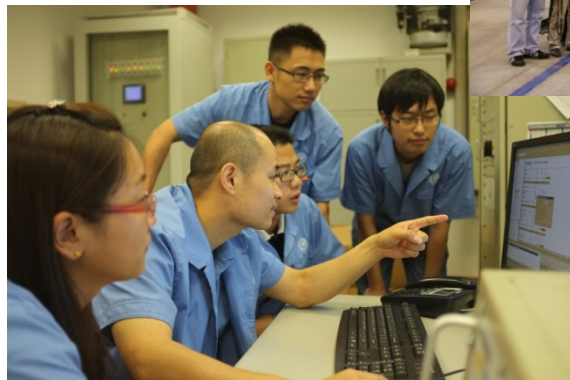


Our cooperation partner and costumer all over the world

(only part of Logo)



Focus on Technology
Concern for Customer
Take care of Employee
Be responsible to Society





Welcome to visit SMVIC & Thank you for your attention !

Shanghai Motor Vehicle Inspection Center

ADD: 68, YuTian (South) Rd., Anting Town, Jiading, Shanghai, China

ZIP: 201805

TEL: 0086 21 69502222

FAX: 0086 21 69502111

Web-site: www.smvic.com.cn